

2012 Bowlers Journal - Baton Rouge



Oil Pattern Distance:	38 Feet	Reverse Brush Drop:	38 Feet	Oil Per Board:	45 uL
Forward Oil Total:	16.965 mL	Reverse Oil Total:	8.325 mL	Volume Oil Total:	25.29 mL
Forward Boards Crossed:	377 Boards	Reverse Boards Crossed:	185 Boards	Total Boards Crossed:	562 Boards

	Start	Stop	Loads	Speed	Crossed	Start	End	Feet	T.Oil
1	2L	2R	6	10	222	0.0	7.0	7.0	9990
2	4L	4R	1	10	33	7.0	8.4	1.4	1485
3	6L	6R	1	14	29	8.4	10.3	1.9	1305
4	8L	8R	1	14	25	10.3	12.2	1.9	1125
5	9L	9R	1	18	23	12.2	14.7	2.5	1035
6	12L	12R	2	18	34	14.7	19.8	5.1	1530
7	15L	15R	1	18	11	19.8	22.3	2.5	495
8	2L	2R	0	22	0	22.3	28.0	5.7	0
9	2L	2R	0	30	0	28.0	38.0	10.0	0

Conditioner:
KEGEL
INFINITY

TransferType:
Transfer Brush

Forward



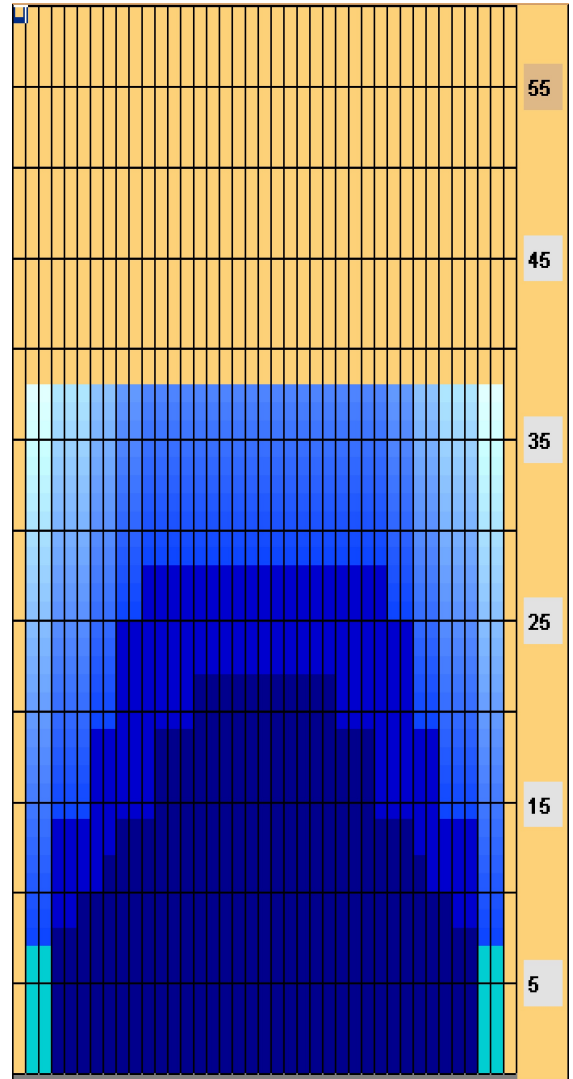
Reverse



Combined



Buff



	Start	Stop	Loads	Speed	Crossed	Start	End	Feet	T.Oil
1	2L	2R	0	26	0	38.0	28.0	-10.0	0
2	11L	11R	1	22	19	28.0	24.9	-3.1	855
3	9L	9R	2	22	46	24.9	18.7	-6.2	2070
4	7L	7R	2	18	54	18.7	13.6	-5.1	2430
5	4L	4R	2	18	66	13.6	8.5	-5.1	2970
6	2L	2R	0	14	0	8.5	0.0	-8.5	0

Item	3L-7L:16L-18R	8L-12L:18L-18R	13L-17L:18L-18R	18L-18R:17R-13R	18L-18R:12R-8R	18L-18R:7R-3R
Description	Outside Track:Middle	Middle Track:Middle	Inside Track:Middle	Middle: Inside Track	Middle:Middle Track	Middle:Outside Track
Track Zone Ratio	2.17	1.23	1.02	1.02	1.23	2.17

